



Enklawa winograpy

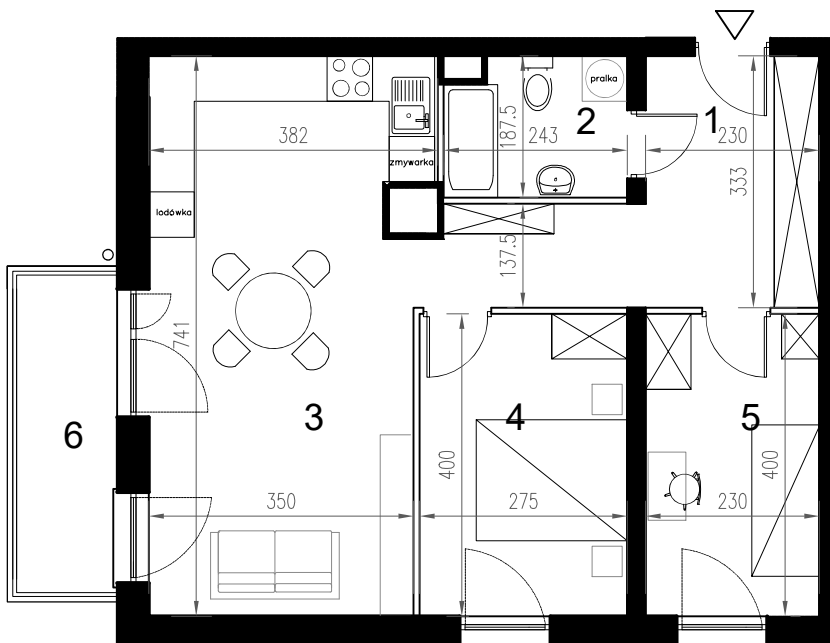
BUDYNEK **A**

1 PIĘTRO

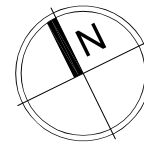
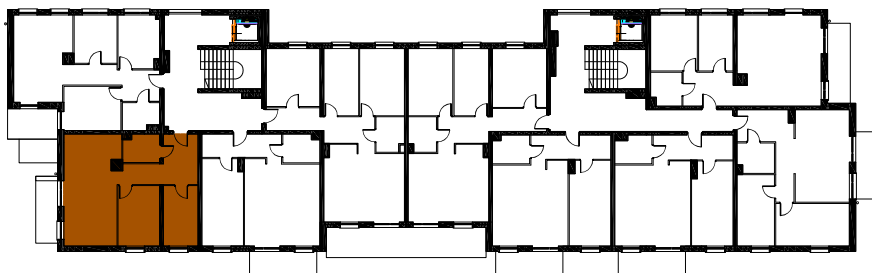
LOKAL **Aa5**


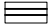

3 pokoje + aneks kuchenny

POWIERZCHNIA **61,30**



| nr | nazwa pom. | pow.[m2] |
|----|---------------------|----------|
| 1 | hol | 11,46 |
| 2 | łazienka | 4,21 |
| 3 | pokój z a.kuchennym | 25,82 |
| 4 | pokój | 10,80 |
| 5 | pokój | 9,01 |
| 6 | balkon | 5,59 |



-  ściany konstrukcyjne / piony instalacyjne
-  ściany działowe (możliwa inna aranżacja)
-  wejście do lokalu