

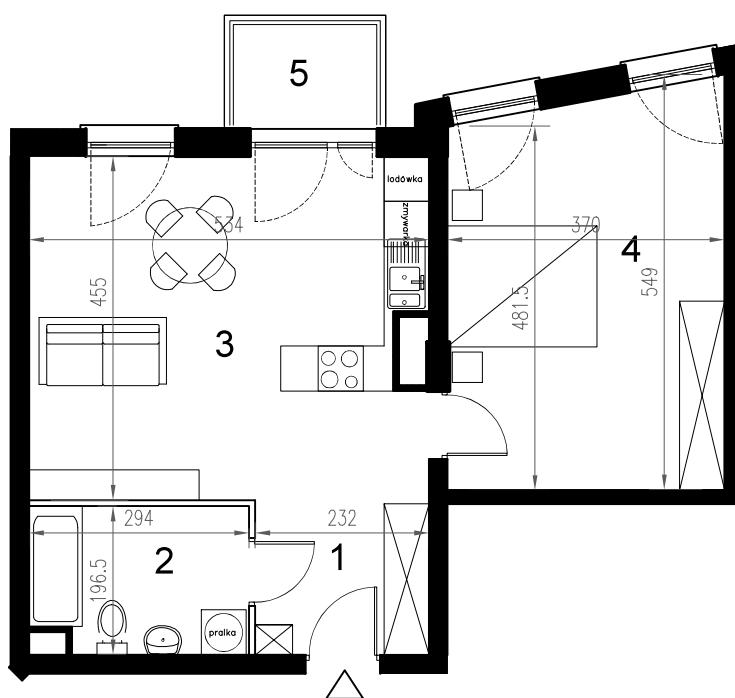


# Enklawa winogrady

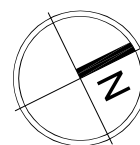
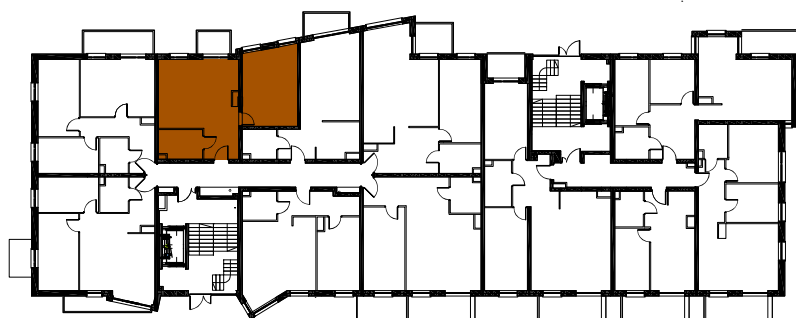
BUDYNEK **B**  
PARTER




LOKAL **Ba2**  
2 pokoje + aneks kuchenny

POWIERZCHNIA **52,41**



nr	nazwa pom.	pow.[m2]
1	hol	4,69
2	łazienka	5,43
3	pokój z a.kuchennym	23,48
4	pokój	18,81
5	balkon	2,64



-  ściany konstrukcyjne / piony instalacyjne
-  ściany działowe (możliwa inna aranżacja)
-  wejście do lokalu