

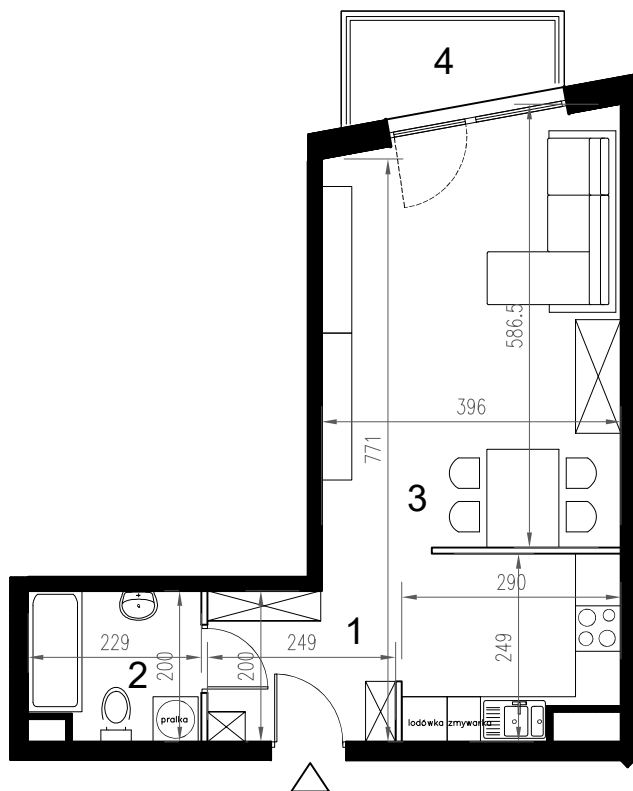


# Enklawa winograpy

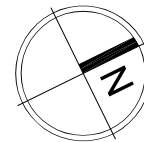
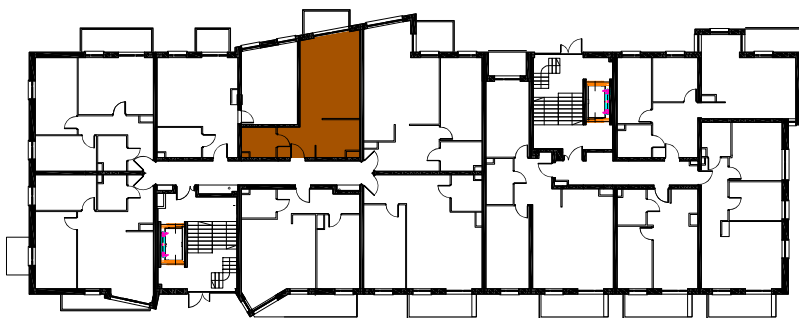
BUDYNEK **B**  
PARTER


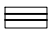

LOKAL **Ba3**  
1 pokój + aneks kuchenny

POWIERZCHNIA **37,98**



nr	nazwa pom.	pow.[m2]
1	hol	4,85
2	łazienka	4,23
3	pokój z a.kuchennym	28,90
4	balkon	3,12



-  ściany konstrukcyjne / piony instalacyjne
-  ściany działowe (możliwa inna aranżacja)
-  wejście do lokalu