



# Enklawa winograpy

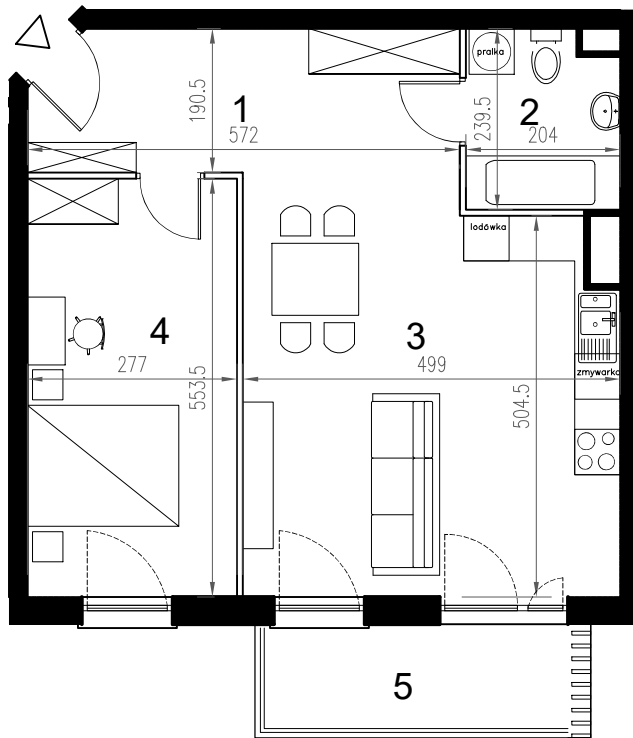
BUDYNEK **B**

PARTER

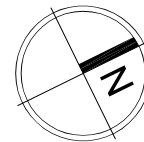
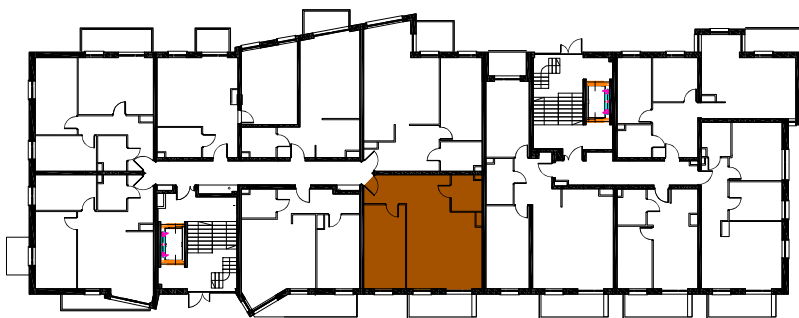
LOKAL **Ba5**


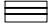

2 pokoje + aneks kuchenny

POWIERZCHNIA **56,10**



nr	nazwa pom.	pow.[m2]
1	hol	10,37
2	łazienka	4,53
3	pokój z a.kuchennym	26,11
4	pokój	15,09
5	balkon	5,62



-  ściany konstrukcyjne / piony instalacyjne
-  ściany działowe (możliwa inna aranżacja)
-  wejście do lokalu