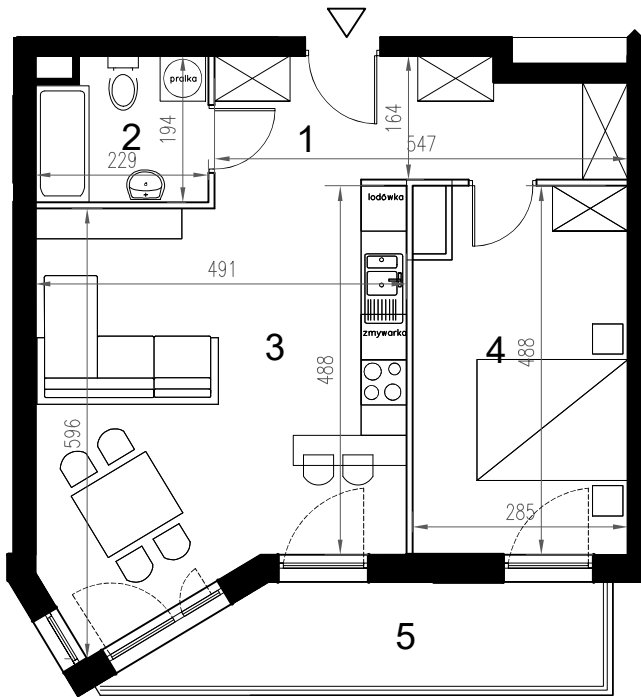




# Enklawa winograpy

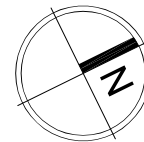
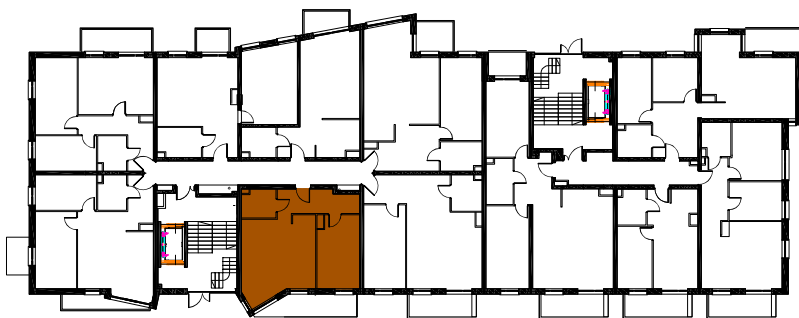



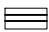

BUDYNEK **B**  
PARTER

LOKAL **Ba6**  
2 pokoje + aneks kuchenny

POWIERZCHNIA **50,69**

nr	nazwa pom.	pow.[m2]
1	hol	8,14
2	łazienka	4,10
3	pokój z a.kuchennym	25,28
4	pokój	13,17
5	balkon	7,70



-  ściany konstrukcyjne / piony instalacyjne
-  ściany działowe (możliwa inna aranżacja)
-  wejście do lokalu