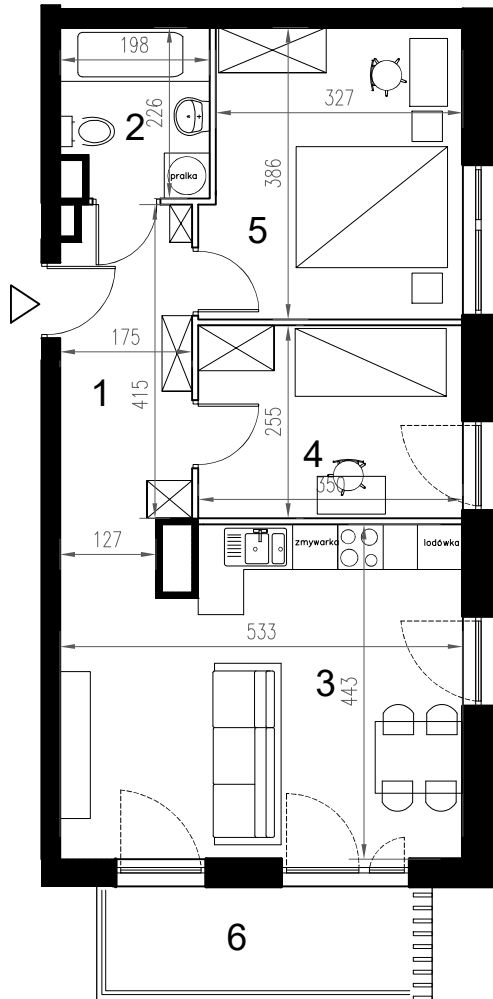




# Enklawa winograpy

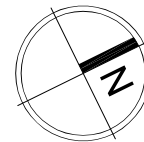
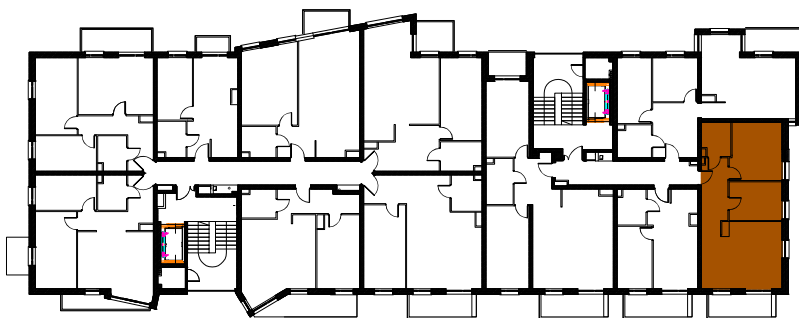



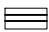

**BUDYNEK** B  
2 PIĘTRO

**LOKAL** Bb10  
3 pokoje + aneks kuchenny

**POWIERZCHNIA** 55,45

nr	nazwa pom.	pow.[m2]
1	hol	6,95
2	łazienka	4,13
3	pokój z a.kuchennym	22,88
4	pokój	8,74
5	pokój	12,75
6	balkon	5,62



-  ściany konstrukcyjne / pionny instalacyjny
-  ściany działowe (możliwa inna aranżacja)
-  wejście do lokalu