

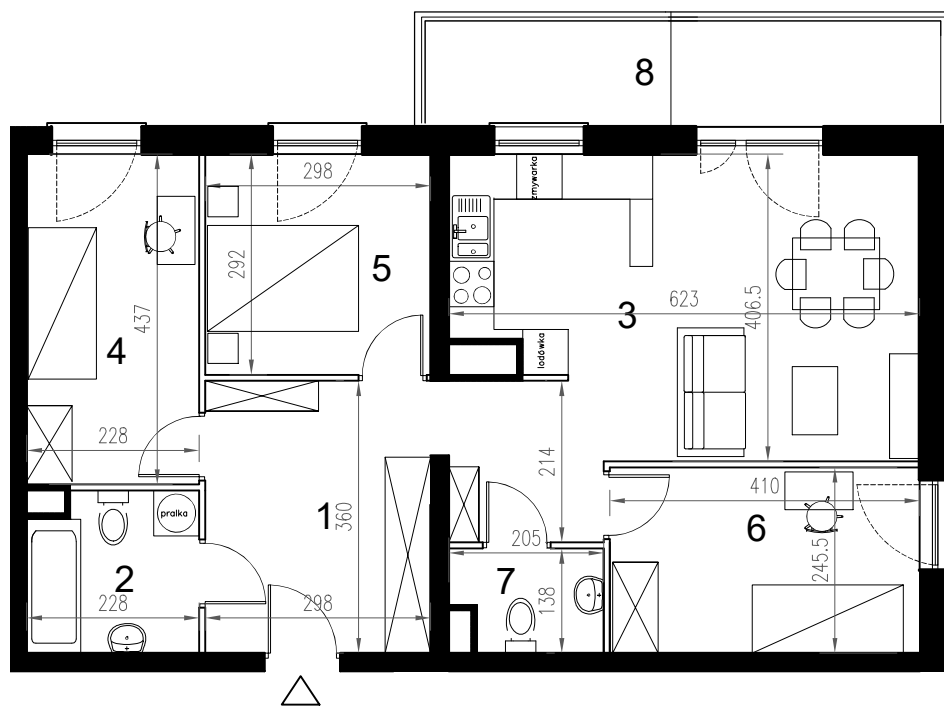


Enklawa winograpy

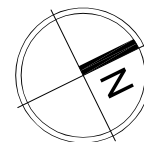
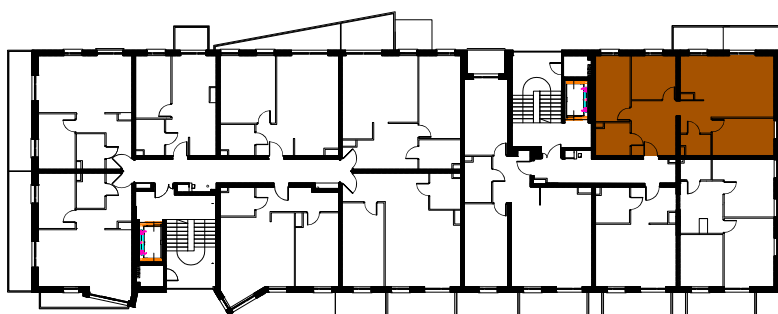
BUDYNEK B
3 PIĘTRO


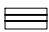

LOKAL Bb13
4 pokoje + aneks kuchenny

POWIERZCHNIA 72,54



| nr | nazwa pom. | pow.[m2] |
|----|---------------------|----------|
| 1 | hol | 15,05 |
| 2 | łazienka | 4,55 |
| 3 | pokój z a.kuchennym | 22,28 |
| 4 | pokój | 9,77 |
| 5 | pokój | 8,53 |
| 6 | pokój | 9,87 |
| 7 | WC | 2,49 |
| 8 | balkon | 9,55 |



-  ściany konstrukcyjne / piony instalacyjne
-  ściany działowe (możliwa inna aranżacja)
-  wejście do lokalu